

# FUN FINDER X

by CruiserRV



Ultra-  
Lightweight

Let the  
Fun Begin

[www.cruiserrv.com](http://www.cruiserrv.com)





### **X-244RBS**

This model features a kitchen and sofa slideout, a huge 84" u-dinette/lounge and a huge bathroom with separate exterior entrance. No more tracking through the unit to get to the bathroom.



### **X-189FDS**

This unit truly maximizes all available space. The flush floor slide features a 6 cu. ft. double door refrigerator and spacious dinette. Large windows and bright decor give this lightweight a "big" feel.



### **X-189FBS**

The jack-knife sofa sleeper adds space for an overnight guest while providing a comfortable sitting area by day. The closets and overheads provide plenty of storage for all your belongings.



# ***FUN FINDER X***



### **X-215WSK**

The outdoor kitchen features a refrigerator, 2 burner stove, and much more. Inside you'll find a queen walk-around bed, swivel entertainment center and sofa with ottoman.





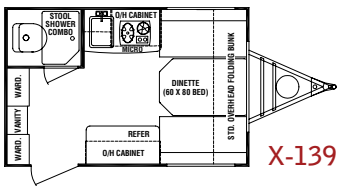
### **X-214WSD**

Features a huge 81" supersized u-dinette on a flush floor slide. The kitchen offers great countertop space, along with microwave, standard stove and stainless steel refrigerator panels. The queen walk-around bed is complemented by the swivel TV entertainment center.

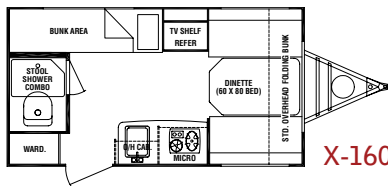


check out more details  
about Fun Finder X at  
[www.cruiserrv.com](http://www.cruiserrv.com)

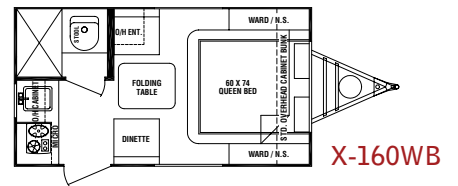




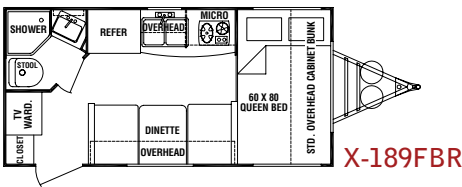
X-139



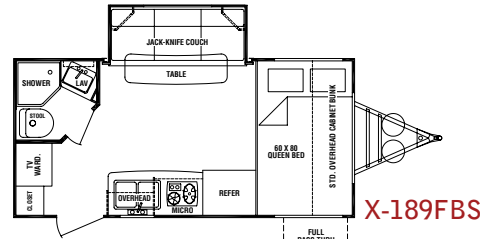
X-160



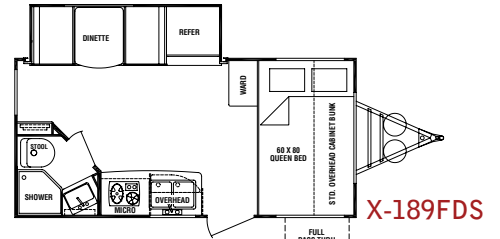
X-160WB



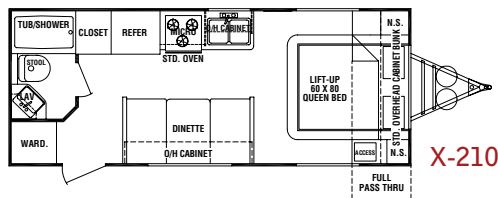
X-189FBR



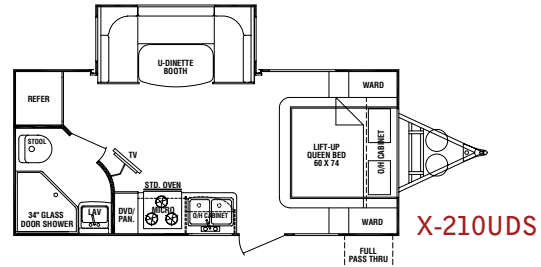
X-189FBS



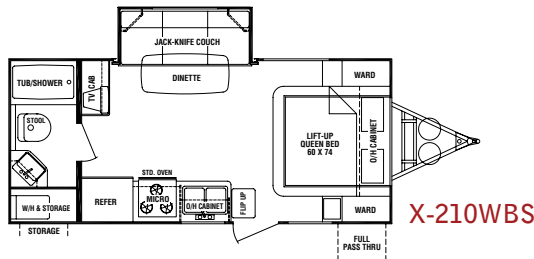
X-189FDS



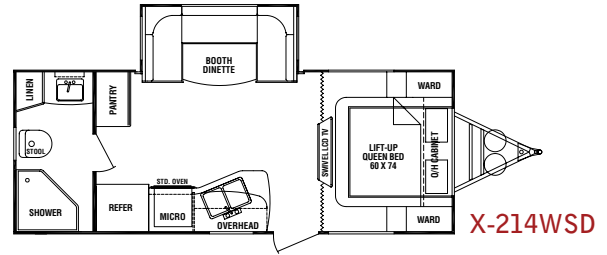
X-210



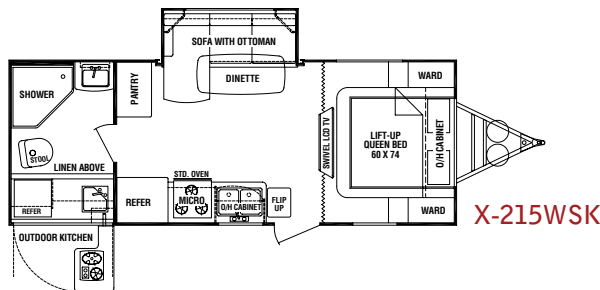
X-210UDS



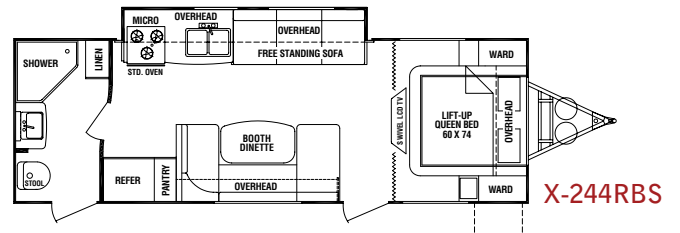
X-210WBS



X-214WSD



X-215WSK



X-244RBS

## Walls

1. Gel coat fiberglass
2. Luan wood backer
3. Polystyrene block foam insulation
4. Luan wood backer
5. Decorative wall vinyl
6. Tinted safety glass windows

## Roof

7. One piece felt-backed vinyl membrane
8. Luan wood decking
9. Aluminum framing
10. Solid block foam insulation
11. Luan wood backer
12. Decorative ceiling vinyl

## Floor

13. One-piece residential grade linoleum - cold crack resistant flooring
14. 5/8" tongue and groove plywood
15. R7 fiberglass batten insulation
16. 1 1/2" aluminum frame stringers on 16" centers
17. Darco underbelly wrap
18. Powder coated 6" solid I-beam frame
19. Frame mounted holding poly-tanks
20. One-piece wheel wells



SPECIFICATIONS	X-139	X-160	X-160WB	X-189FBR	X-189FBS	X-189FDS	X-210	X-210UDS	X-210WBS	X-214WSD	X-215WSK	X-244RBS
Exterior Length	14'9"	16'6"	16'11"	18'3"	18'9"	18'9"	23'6"	21'9"	21'9"	24'6"	24'8"	27'9"
Exterior Width	7'	7'	7'	7'	7'	7'	7'6"	7'6"	7'6"	7'6"	7'6"	7'6"
Exterior Height w/ A/C	9'10"	9'10"	9'10"	9'10"	9'10"	9'10"	9'10"	9'10"	9'10"	9'10"	9'10"	9'10"
Interior Height	6'4"	6'4"	6'4"	6'4"	6'4"	6'4"	6'4"	6'4"	6'4"	6'4"	6'4"	6'4"
Bed Size	N/A	N/A	60"x74"	60"x80"	60"x80"	60"x80"	60"x80"	60"x74"	60"x74"	60"x74"	60"x74"	60"x74"
Dinette Bed Size	60"x80"	60"x80"	N/A	33"x72"	N/A	32"x70"	40"x72"	41"x81"	N/A	41"x81"	N/A	41"x84"
Sofa Size	N/A	N/A	N/A	N/A	70"	N/A	N/A	N/A	70"	N/A	70"	70"
Axle Weight (lbs.)	1,963	2,313	2,293	2,533	2,718	2,640	3,070	3,160	2,975	3,375	3,410	3,719
Hitch Weight (lbs.)	200	170	290	255	280	400	380	410	395	445	430	440
Dry Weight (lbs.)	2,213	2,483	2,593	2,788	2,998	3,040	3,450	3,570	3,370	3,820	3,840	4,159
GVWR (lbs.)	3,700	3,670	3,390	5,855	5,880	6,000	5,980	6,010	5,995	6,045	6,030	6,040
Cargo Capacity (lbs.)	1,487	1,187	807	3,067	2,892	2,960	2,530	2,440	2,625	2,225	2,190	1,881
Fresh Tank (gal.)	25	25	25	30	30	30	36	36	36	36	36	36
Gray Tank (gal.)	32	32	32	32	25	25	38	38	38	38	38	38
Black Tank (gal.)	25	25	25	25	25	25	38	38	38	38	38	38
LP Bottle (lbs.)	40	40	40	40	40	40	60	60	60	60	60	60
Power Conv. (Amps)	35	35	35	55	55	55	55	55	55	55	55	55
Elec. Ign. Furn (BTU)	16K	16K	16K	16K	16K	16K	20K	20K	20K	20K	20K	20K

## Décors



## Exterior Features

check out more details at [www.cruiserrv.com](http://www.cruiserrv.com)



Pass-thru storage



LED brake lights



Front window with rockguard



Double step entry step



Optional electric stabilizer jacks



Outside shower



Detachable 30 amp power cord



Outside TV mount bracket



Optional stainless steel BBQ grill



Optional electronic awning with manual tilt



EZ-flex™ suspension



Cast aluminum wheels with radial tires

## Cruiser RV, LLC

7805 North SR 9 • PO Box 130 • Howe, IN 46746

Ph 260-562-3500 • Fax 260-562-2210

Toll Free 866-277-5630

[www.cruiserrv.com](http://www.cruiserrv.com)



Your Dealer